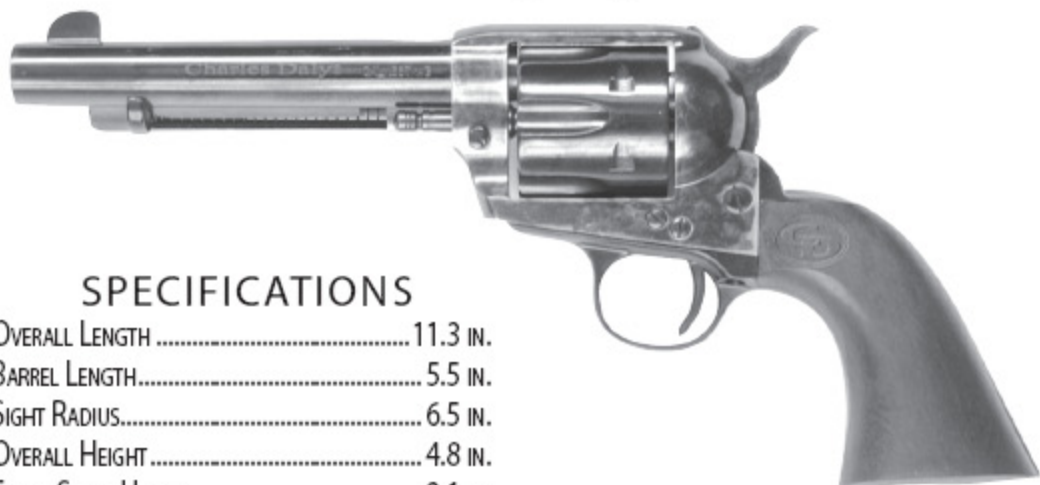


CHARLES DALY 1873 STANDARD MODEL, \$479

☑ Gun Tests RecommendS: our pick ☑

Clean lines reminiscent of turn-of-century Colts are complemented by the dark case coloring of the Daly 1873 Standard Model. The rounded trigger guard was most pleasing — and authentic — to our eyes. The high front sight needed attention, though.



SPECIFICATIONS

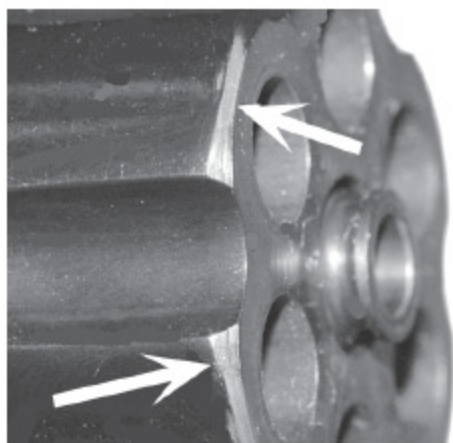
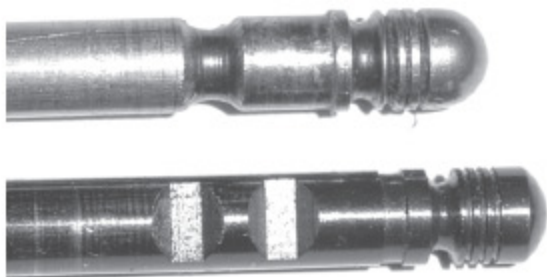
OVERALL LENGTH	11.3 IN.
BARREL LENGTH.....	5.5 IN.
SIGHT RADIUS.....	6.5 IN.
OVERALL HEIGHT	4.8 IN.
FRONT STRAP HEIGHT	2.1 IN.
BACK STRAP HEIGHT.....	3.1 IN.
WEIGHT UNLOADED.....	40.2 OZ.
CAPACITY.....	6 ROUNDS
MAXIMUM WIDTH	1.7 IN.
GRIP THICKNESS (MAX)	1.5 IN.
GRIP CIRCUMFERENCE (MID).....	4.4 IN.
FRAME MATERIAL/FINISH.....	CASE-COLORED STEEL
BARREL	BLUED STEEL

GRIP MATERIAL/FINISH.....	ONE-PIECE WALNUT
TRIGGER PULL WEIGHT SINGLE ACTION.....	3.3 LBS.
TRIGGER SPAN SINGLE ACTION	3.2 IN.
WARRANTY	LIMITED LIFETIME
TELEPHONE	(866) 325-9486
WEBSITE OR EMAIL.....	WWW.CHARLESDALY.COM

The case-colored Charles Daly single action broke down into almost identical parts to those of the AWA. But note the two notches in the base pin.



The AWA scored one up on the Daly with its grooved base pin (top). The Daly had the notched unit on the bottom, which had to be located perfectly for the pin to lock in place, a touchy operation.



Like the AWA the Daly/Pietta showed the correct bevels (arrows) to the cylinder of period Colts. The bluing was excellent.