

**WALTHER P-38 9MM, \$800  
GUN TESTS GRADE: A-**

The Walther is underappreciated for its influence on modern handgun design. The first widely successful first-shot double-action service pistol, the Walther is well made of good materials. The wartime steel-frame P-38 is easy to shoot well. The most accurate handgun tested, the Walther has a certain prestige and makes for a recreational shooter that could protect the home just in case.



**SPECIFICATIONS**

Overall Length .....	8.3 in.
Overall Height .....	5.3 in.
Barrel Length.....	4.5 in.
Sight Radius .....	6.9 in.
Front Strap Height.....	2.6 in.
Back Strap Height .....	3.4 in.
Weight Unloaded .....	3.8 oz.
Weight Loaded (8 rds 124-gr) .....	39.9 oz.
Capacity.....	8+1
Maximum Width .....	1.6 in.
Grip Thickness.....	1.3 in.
Grip Circumference .....	5.4 in.
Frame.....	Blued Steel
Barrel.....	Blued Steel
Slide .....	Blued Steel
Grip.....	Bakelite
Trigger pull weight double action.....	>16 lbs.
Trigger Pull Weight Single Action.....	5.75 lbs.
Trigger Span Single Action .....	2.4 in.
Warranty .....	NA
Telephone.....	NA

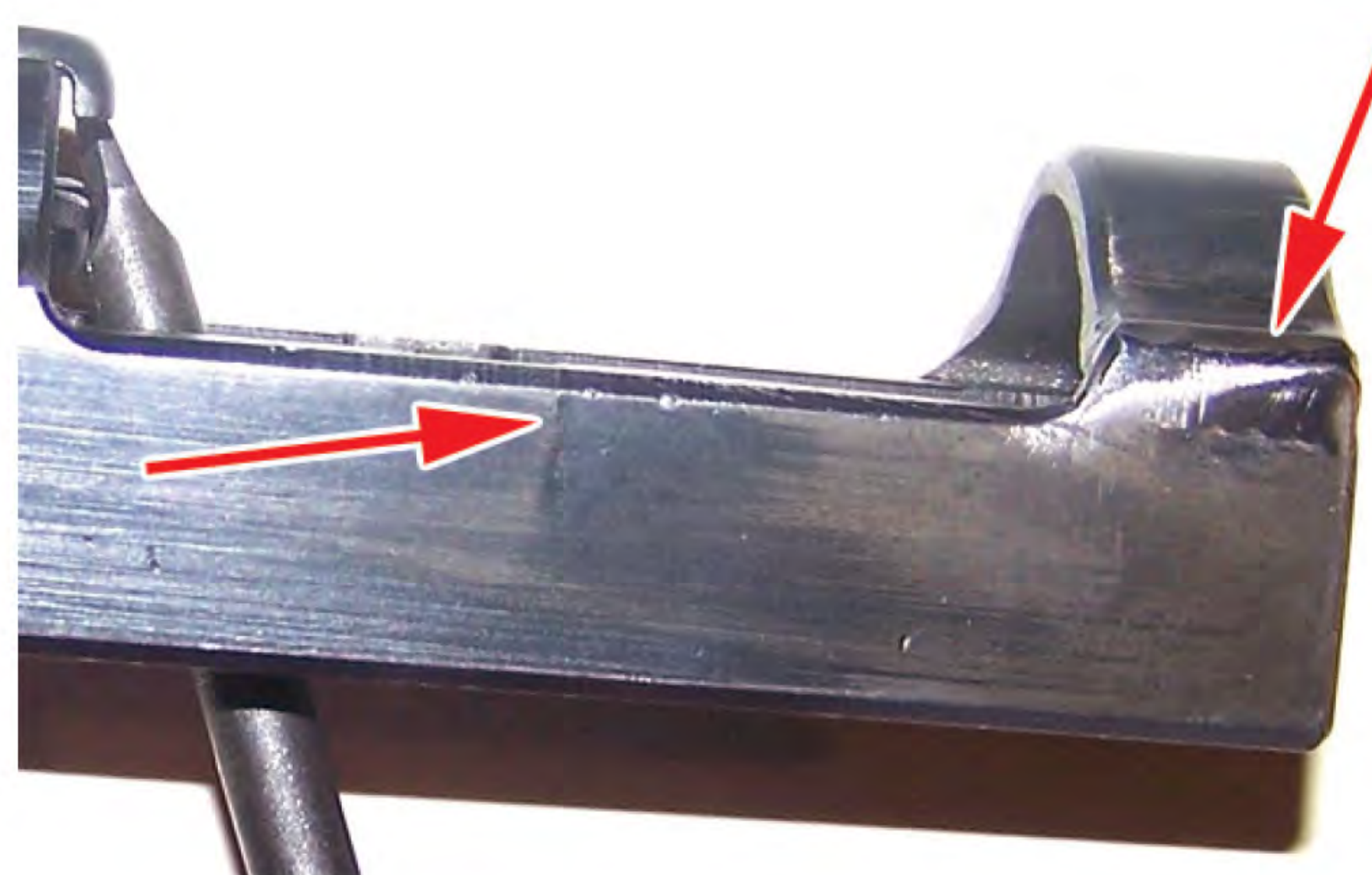


All agreed the steel-frame Walther sat well in the hand, giving a comfortable grip.



The P-38 breaks down easily, one reason why the Walther is superior to later service pistols such as the Beretta 951, French M 50, the Helwan and the duplicative Smith & Wesson Model 39, basically an Americanized P-38.

With the P-38 in her right hand, Alisha, our female tester, can touch her fingers together, but not with the thicker modern Beretta 92 in her left hand. Perhaps there is something to the single-column design.



This is a WW II P-38 with two cracks in the slide—and it is still running. We would not recommend firing it, but the owner has had the front crack welded.