

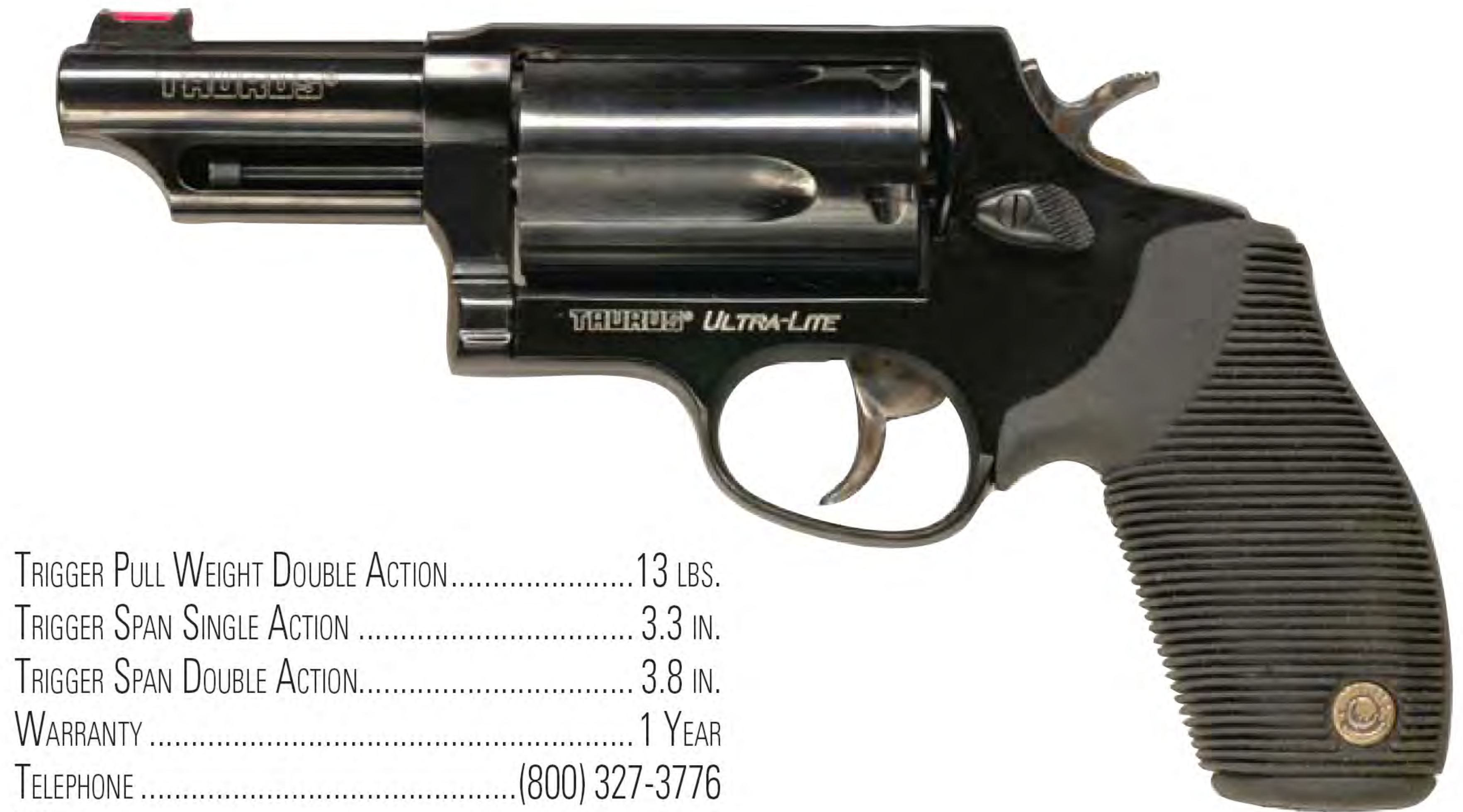
**TAURUS JUDGE NO. 4510TKR-3BUL 3-INCH 45 LC/410-BORE,\$620**

**GUN TESTS GRADE: A**

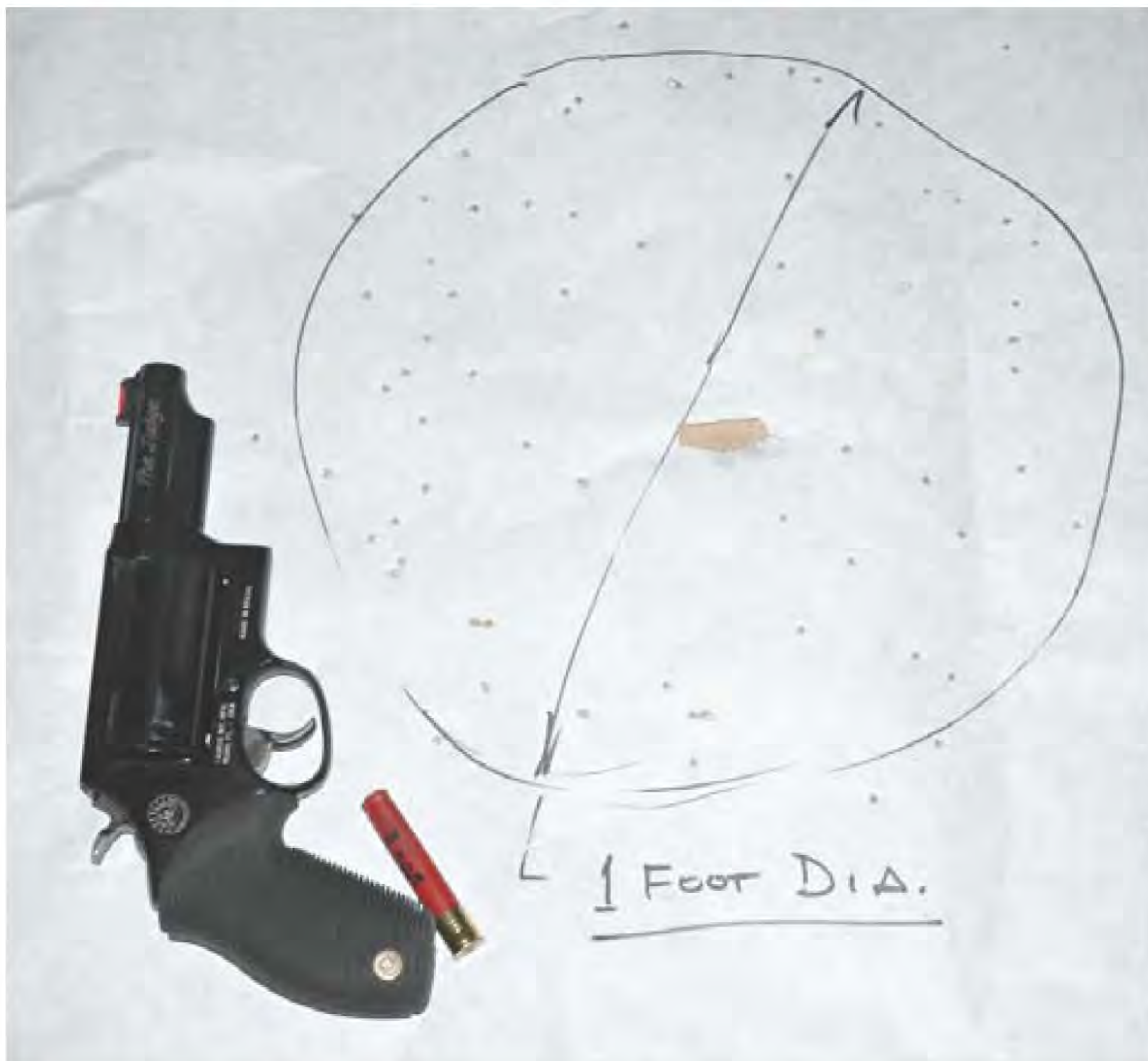
**We found the Judge to be a lot smaller than we thought it would be. It is a very handy, easily carried revolver that did exactly what it was supposed to do. The “Ribber” grips tamed recoil well enough that we didn’t want any more weight to this five-shooter than this Ultra-Lite version had. The red front sight worked well, too.**

**SPECIFICATIONS**

OVERALL LENGTH .....	9.0 IN.
OVERALL HEIGHT.....	6.2 IN.
BARREL LENGTH.....	3.0 IN.
SIGHT RADIUS.....	5.3 IN.
FRONT STRAP HEIGHT.....	2.3 IN.
BACK STRAP HEIGHT.....	3.7 IN.
WEIGHT UNLOADED.....	25 OZ.
CAPACITY .....	5
MAXIMUM WIDTH.....	1.52 IN.
GRIP THICKNESS (MAX) .....	1.2 IN.
GRIP CIRCUMFERENCE (MAX).....	5.7 IN.
FRAME MATERIAL/FINISH.....	GLOSS-BLACK ALUMINUM
BARREL.....	BLUED STEEL
GRIP .....	BLACK RUBBER “RIBBER”
TRIGGER PULL WEIGHT SINGLE ACTION.....	5.2 LBS.



TRIGGER PULL WEIGHT DOUBLE ACTION.....	13 LBS.
TRIGGER SPAN SINGLE ACTION .....	3.3 IN.
TRIGGER SPAN DOUBLE ACTION.....	3.8 IN.
WARRANTY .....	1 YEAR
TELEPHONE .....	(800) 327-3776
WEBSITE.....	WWW.TAURUSUSA.COM



*At 3 feet the Judge made 1-foot-diameter patterns. We estimated the maximum range for self defense would be about 10 feet. Smaller shot would also be more effective than the #4s tested.*

*Fit and finish and lockup were excellent. We liked the feel and balance of this revolver. We found that hot 45 LC loads gave more recoil than .410 shotshells, which filled up the imposing 2.6-inch-long cylinder, shown at right. Specialized holsters for this handful of gun are being made.*



*Taurus lets you know what this gun is, though it’s not cataloged by that name. It’s basically a Tracker with a special cylinder and frame. There are long-barrel, stainless, and 3-inch Magnum 410 versions of the Judge.*

