

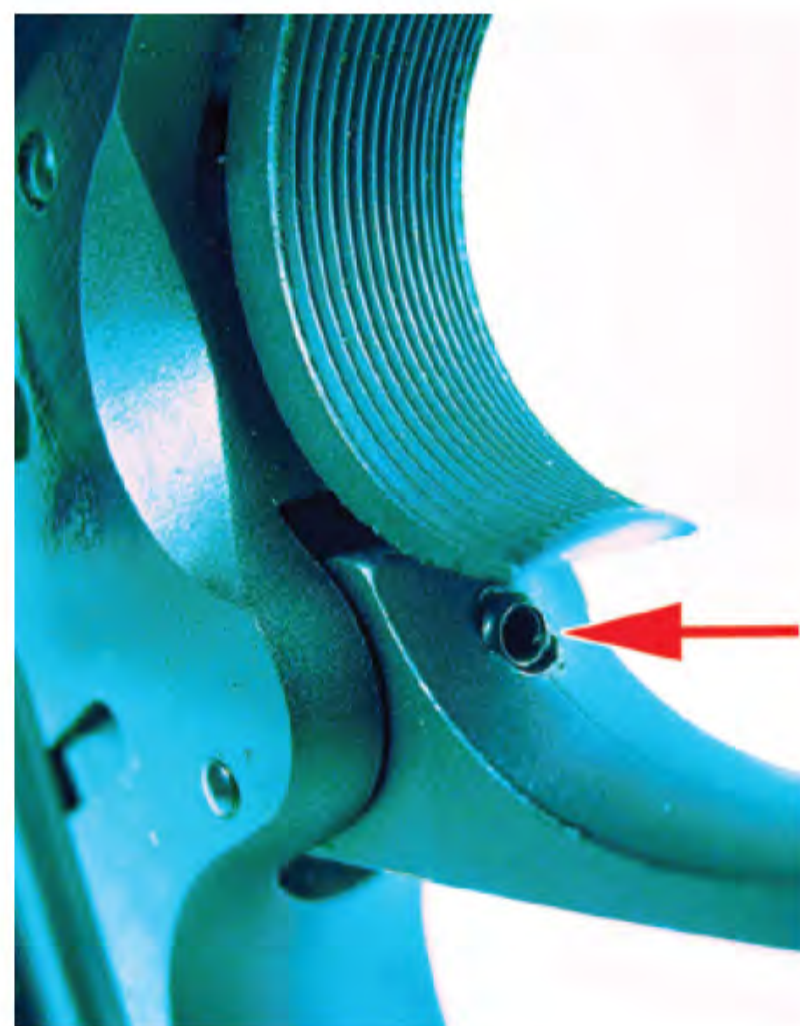
**SMITH & WESSON MODEL 41 130512 22 LR, \$1139**

**GUN TESTS GRADE: A-**

The most accurate pistol was also the most fun. A glitch prevented us from awarding a full 'A' rating.

**SPECIFICATIONS**

Overall Length.....	12.0 in.
Barrel Length.....	7.0 in.
Sight Radius.....	9.45 in.
Overall Height.....	5.35 in.
Front Strap Height.....	2.6 in.
Back Strap Height.....	3.6 in.
Weight Loaded (40-gr).....	45.4 oz.
Weight Unloaded.....	42.2 oz.
Capacity.....	10+1
Maximum Width.....	1.7 in.
Grip Thickness (Max).....	1.4 in.
Grip Circumference (Max).....	5.8 in.
Frame.....	Matte Blue Carbon Steel
Barrel.....	Carbon Steel
Slide.....	Gloss Blue Carbon Steel
Grip.....	Checked Wood
Trigger Pull Weight Single Action.....	7.5 lbs.
Trigger Span Single Action.....	2.7 in.
Warranty.....	Lifetime
Telephone.....	(800) 331-0852
Website.....	www.Smith-Wesson.com
Manufactured In.....	USA



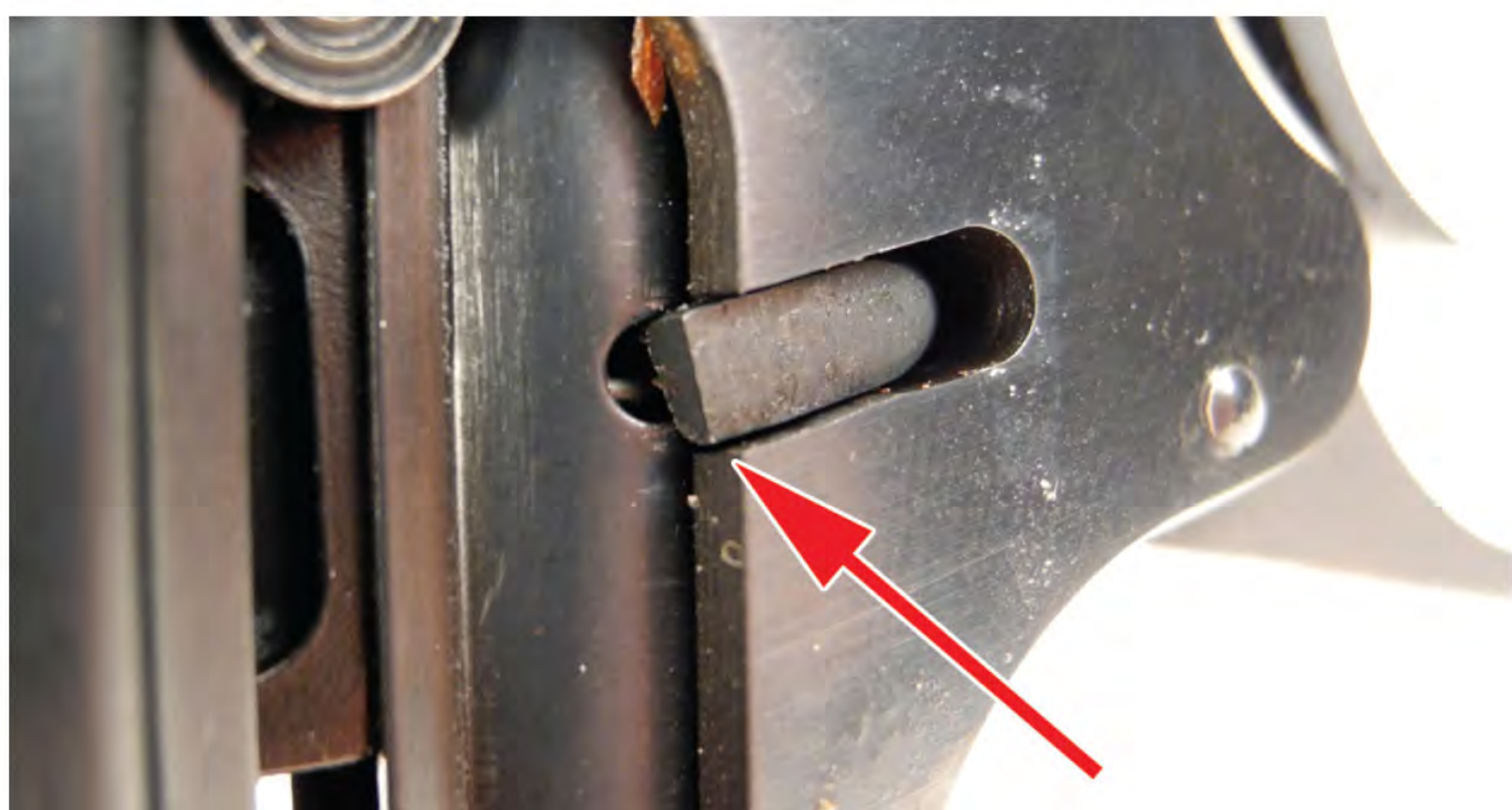
**Above: The Model 41 had a short, crisp trigger that the shooter could balance by adjusting overtravel. The small Allen screw behind the trigger (arrow) acted as a stop. Pulling down the trigger guard provided easy access.**



**Above: We had difficulty operating the safety, so we left it in ready-to-fire position (lower-right arrow). The slide release was easy to operate (top arrow), but the magazine release (lower left arrow) was somewhat shielded by the grip contour that protruded the same amount on both sides. This outward contour served as a thumbrest on one side and helped us index the trigger on the opposite side of the grip. This made the 41 ambidextrous, in our view. The dovetail connecting the rear sight was substantial.**



**Above: The wood grip encompassed the backstrap and provided a wide flat surface (arrow) on the bottom, which helped when shooting from support. The magazine well was recessed.**



**Left: The only problem we had was caused by the magazine-retaining stud (arrow) not making enough contact with the magazine. A Smith & Wesson representative explained how to fix it over the telephone.**



**Left: The rear sight blocked glare, letting us focus on the position of the front sight in relation to the rear notch.**