

**COLT 2ND-GEN. 1860 ARMY, 44 CAL., ABOUT \$650
GUN TESTS GRADE: A**

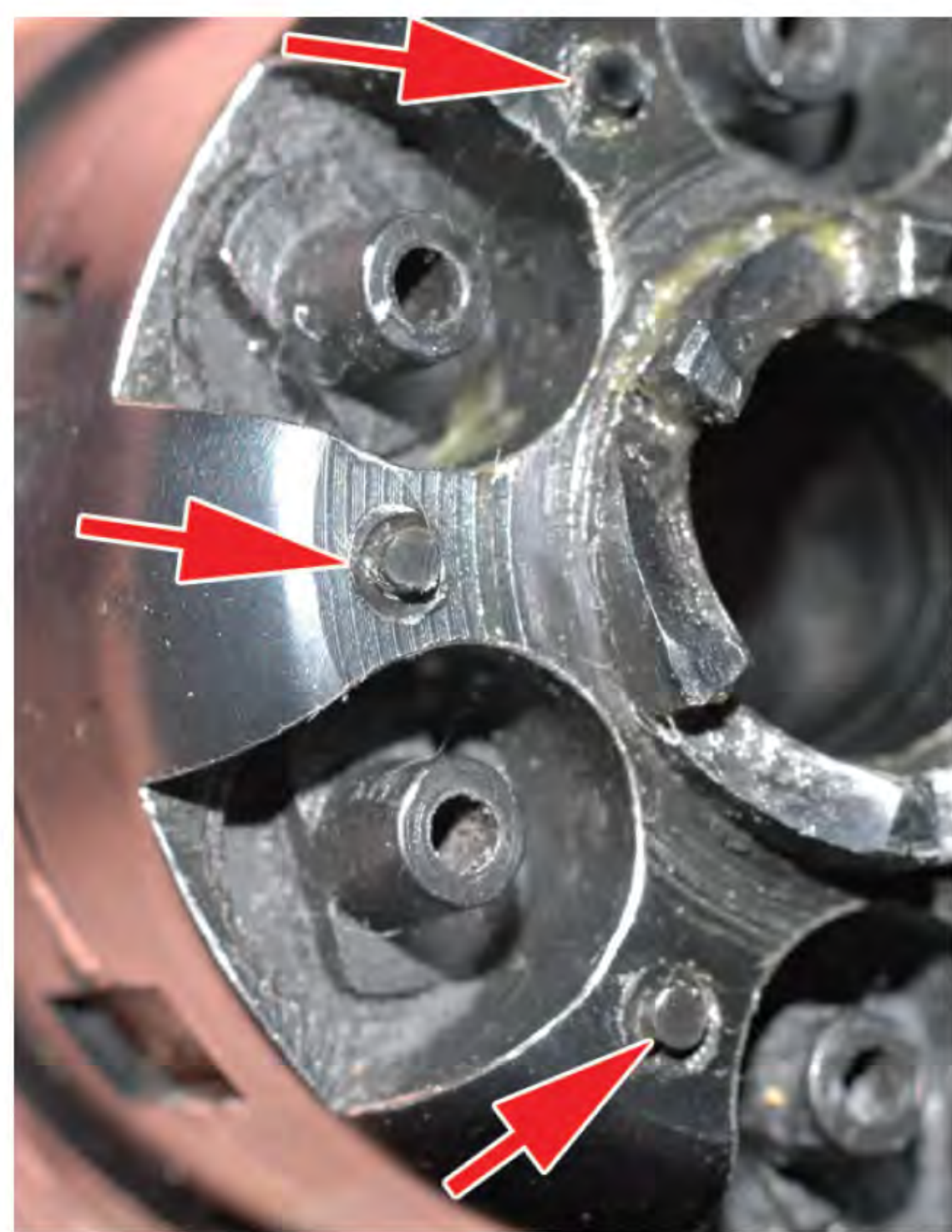
Considered by some to be the most graceful of the early Colts, the 1860 Army made a great name for itself in the Civil War. More powerful than the 1851 Navy, the Army fired a heavier ball at nearly the same speed. Blackpowder ballistics at that time may well have exceeded our test results because some of the early powders were far superior to what's generally available today. How about those grips!



Overall Length 13.8 in.
 Overall Height 5.4 in.
 Barrel Length 8.0 in.
 Sight Radius 10.6 in.
 Front Strap Height 2.5 in.
 Back Strap Height 3.5 in.
 Weight Unloaded 41.3 oz.
 Weight Loaded (6 rds.) 43 oz.
 Capacity 6
 Maximum Width 1.6 in.
 Grip Thickness (max) 1.4 in.

Grip Circumference 4.3 in.
 Grips One-Piece Walnut
 Grip Straps Brass & Blued Steel
 Frame Case-Hardened Steel
 Loading Rammer Case-Hardened Steel
 Barrel Blued Steel
 Cylinder Blued Steel
 Trigger Pull Weight 3.1 lbs.
 Trigger Span 3.2 in.
 Warranty n/a
 Made In U.S.A.

Right: This 1860 Army, like all of these 2nd-Gen. Colts, come apart the same way. Pull the crosspin just in front of the cylinder, tap it out, and take off the barrel. The cylinder will then come off the axle.



Left: The arrows point to small pins between each of the chambers. This is the 1860, but all three guns have them. The hammers all have a notch that fits over these pins, locking the cylinder in place between chambers. That way you could load all six chambers and carry the gun safely. Some SA reproductions we've seen omit these helpful pins.

Right: The front sight is the most obvious alteration to this 1860.

It gave us hits dead center at 15 yards. Before this was done, the gun hit 9 inches high at that range. The barrel bluing is on the purple side, not as rich as on the others.

