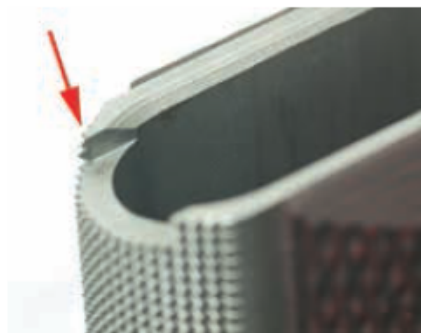


**ROBERTS DEFENSE SUPER GRADE PRO
45 ACP, \$1549**

GUN TESTS GRADE: A-

A couple of bobbles put this one a step behind the Ithaca, in our opinion. An early feeding problem with Lawman ammo resolved itself, and the sights weren't regulated from the factory and had to be drifted to deliver the correct point of impact.

Action	Locked Breech Single-Action Semi-Auto
Overall Length	8.6 in.
Overall Height	5.9 in.
Maximum Width	1.3 in.
Weight Unloaded	42.4 oz.
Weight Loaded	47.6 oz.
Barrel	5.0 in.; Air-Gauged Match-Grade Stainless Steel
Magazine	(2) 8-Rd. Act-Mags, Blued; w/Bumper
Slide	Black-Nitride Satin Stainless Steel; Front & Rear Serrations, Grooved Round Top
Frame	Satin Stainless Steel, Hand-Lapped
Front Strap Height	2.5 in., 25-lpi Checkering
Back Strap Height	2.75 in., 25-lpi Checkering
Grips	VZ Laminate
Grip Thickness (max)	1.3 in.
Grip Circumference (max)	5.7 in.
Front Sight	Kensight Contoured Blade; Trijicon H3 Tritium Insert
Rear Sight	Kensight DFS 1911 Tritium, Recessed Blade, Fixed, Dovetailed
Trigger Pull Weight Single Action	4.9 lbs.
Trigger Span Single Action	2.9 in.
Safeties	Left-Side Slide Lock, Beavertail Grip
Warranty	Limited Transferable Lifetime
Telephone	(855) 762-1911
Website	RobertsDefense.com
Made In	Oshkosh, Wisc.



At bottom is one of two beautifully blued Act-Mags.

The arrow points to a razor-sharp spot on the Roberts. Another occurred on the other side of the magwell and two more on the front of the stainless frame.



Above: At top is the wide safety paddle. Inside, the guts were free of burrs and marks.